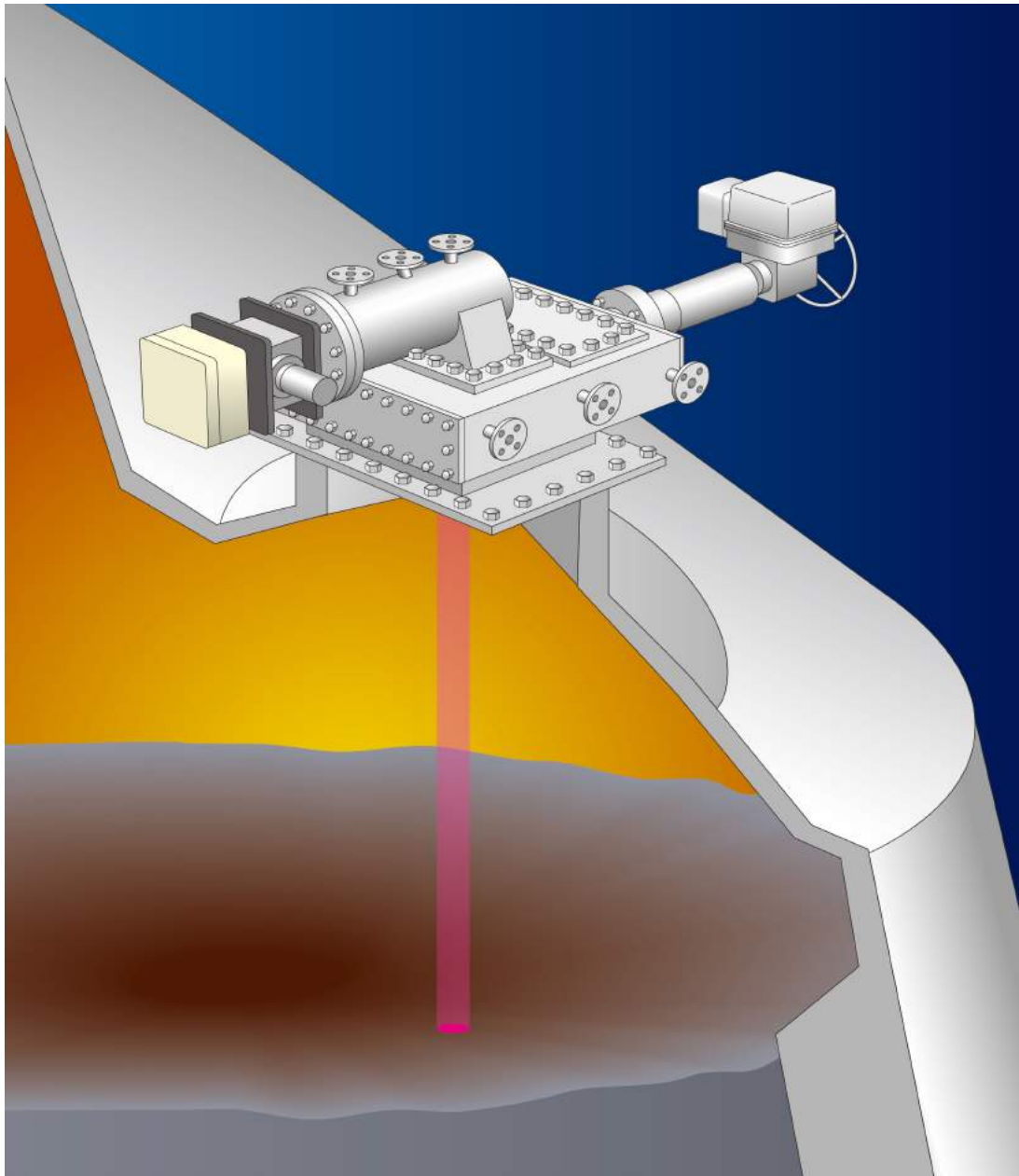




LANCELESS BLAST FURNACE 2D PROFILE METER

MWS-BF-2D PAT.

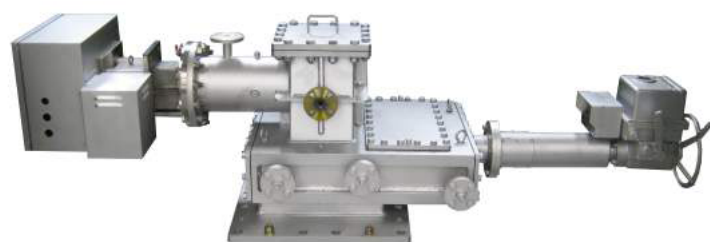
MILLI-SCANNER



The Wadeco MWS-BF-2D Milli-Scanner is a combination of a mechanical scanning system and high-speed rangefinder which can be used to display a 2D stockline profile after every feeder rotation.

WADECO CO.,LTD.

All problems with conventional lance systems solved!



Special Features

- 2D profile measurement and display for every feeder rotation. (PAT.)
- The descending speed is measured and displayed.
- Compact, simple design results in easy maintenance.
- Non-intrusive, fixed installation prevents interference with the feeder and allows for a small installation space.
- With a valve, the profile meter is separated from the inside of the blast furnace.
- No installation platform required.
- Maximum distance measurement of 15m.
- Special filter for elimination of unwanted signals (chattering, obstructions inside the blast furnace) (option).

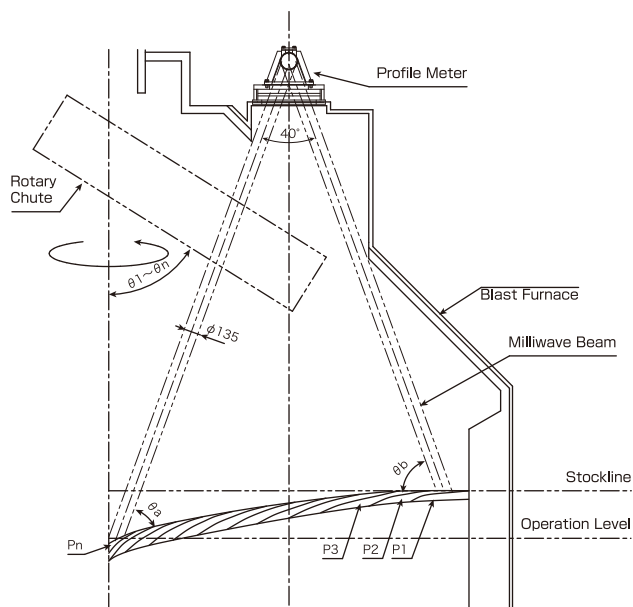
Specifications

- Field of View $\pm 20^\circ$ (half of stockline)
- Accuracy $\pm 50\text{mm}$
- Measurement Time Min. 3 sec.
- Installation Hole Size 565mm x 300mm

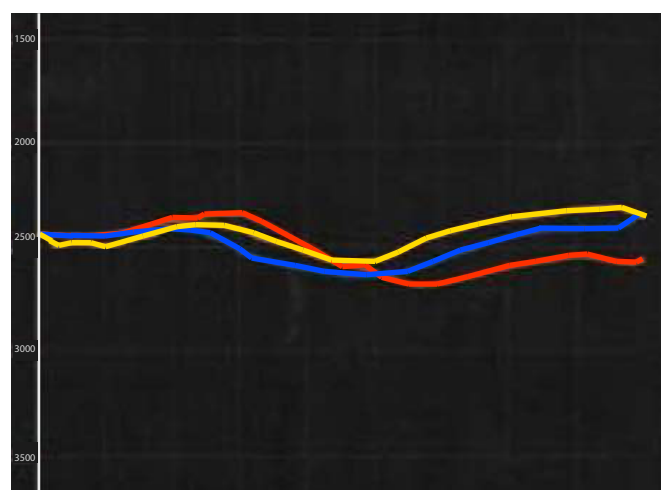
Output

- Profile measurement data
- Descending speed measurement data

Installation and Measurement Area



Actual Measurement Data



These specifications may be changed without notice.



HEAD OFFICE 1-12-9, Meishin-cho, Amagasaki-shi, Hyogo-ken, 661-0021, Japan
TEL.(06)6422-1248 FAX(06)6422-1247

TOKYO BRANCH 202 Shibuya-homes,2-1,Udagawa-cho,Shibuya-ku,Tokyo
150-0042,Japan
TEL.+81-3-3770-5519 FAX.+81-3-3770-5520
www.wadeco.co.jp