



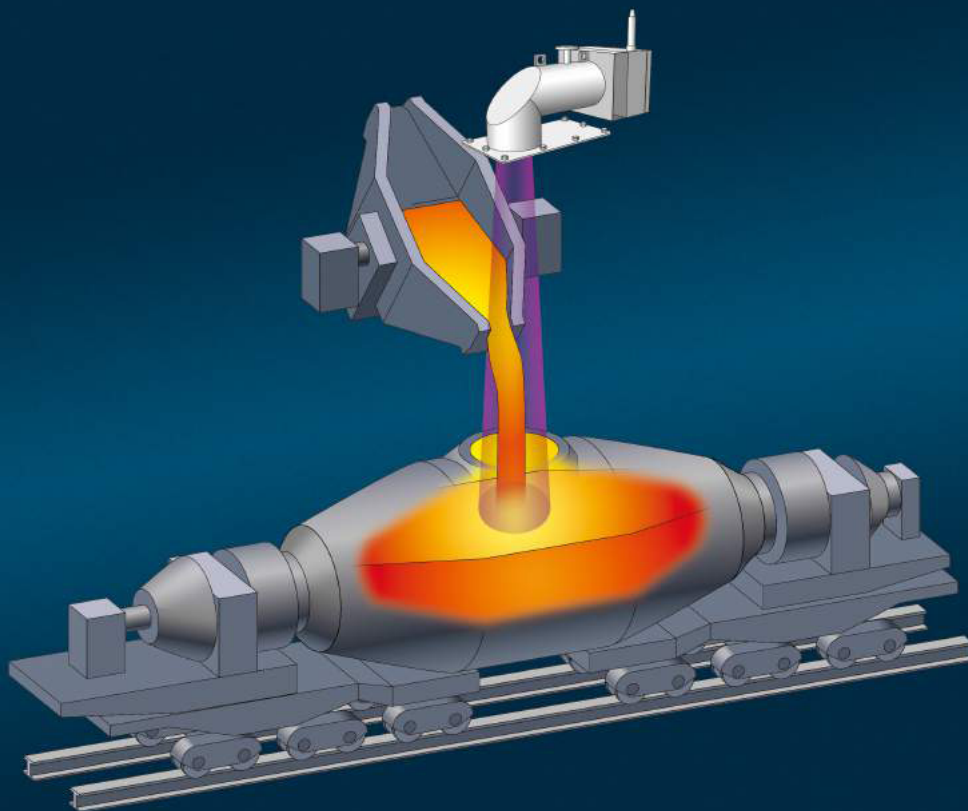
**Provisional**

**Milliwave Level Sensor  
For Torpedo Car Level  
Measurement**

**MWS-79RF-TP**

**Milli-Ranger**

**NEW compact 79GHz  
Milli-Ranger!**



**WADECO CO.,LTD.**

# MILLI-RANGER FOR TORPEDO CAR LEVEL MEASUREMENT

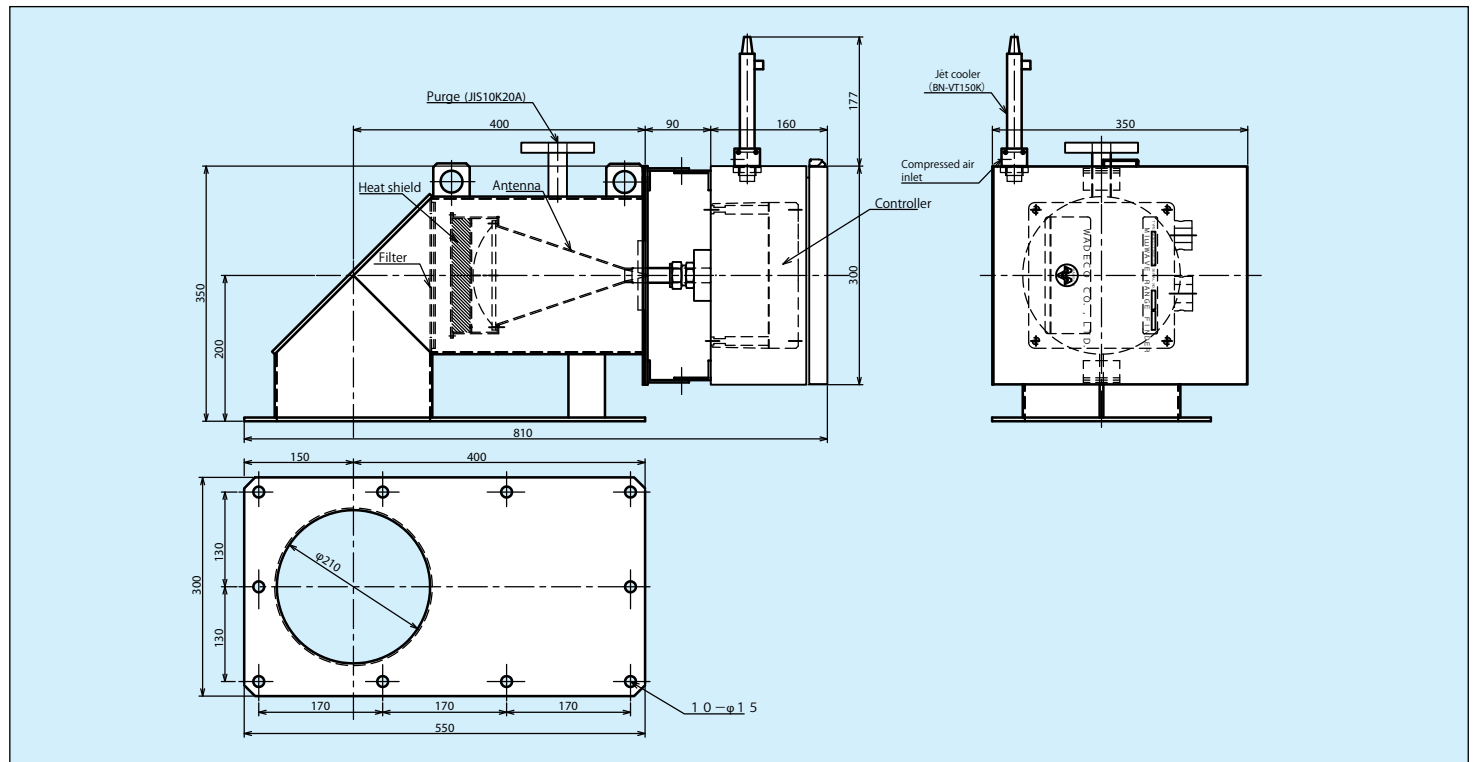
## Special Features

- Compact Size.

## Specifications

Type	Controller: MWS-79RF-TP Antenna: H-150A-79L-TP (Horn antenna with $\phi$ 150 lens)	Analog Distance Output	Range ..... 4mA~20mA Accuracy ..... $\pm 0.5\%$ Max. Load Resistance ... 400 $\Omega$
Power Supply	AC90~240V, 50/60Hz	Abnormal Output	1a relay contact (relay is excited under normal condition) DC30V 2A or AC250V 0.5A
Power Consumption	Approx. 30W	Ambient Temperature	Controller: -10°C~+50°C Antenna: -20°C~+200°C(When purged)
Milliwave Frequency	79GHz	Construction	Controller: Aluminum diecast Antenna: SUS304 (Teflon lens) Main Body: SS400
Modulation	FM-CW		
Transmission Power	Approx. 10mW	Color	Controller: Taupe Main Body: Heat-resistant paint (silver)
Range	30m		
Measurement Accuracy	0.1% or $\pm 5$ mm(whichever one is larger) When target is a metal plate	Weight	Approx. 30kg
Update Speed	Min. approx. 250msec		
PC Interface	RS485 or RS-232C		

## Outline Drawing



HEAD OFFICE 1-12-9, Meishin-cho, Amagasaki-shi, Hyogo-ken, 661-0021, Japan  
TEL.(06)6422-1248 FAX(06)6422-1247

TOKYO BRANCH 202 Shibuya-homes,2-1,Udagawa-cho,Shibuya-ku,Tokyo  
150-0042,Japan  
TEL.+81-3-3770-5519 FAX.+81-3-3770-5520  
www.wadeco.co.jp

These specifications may be changed without notice.